

# *Beaded Christmas Tree*

This is a nice pattern to learn how to do bead work. Once you have learned to attach the beads, the project goes quickly. I have included the DMC floss colors for those who would like to make this as a regular cross stitch pattern. Have fun mixing cross stitches and beads for different effects.

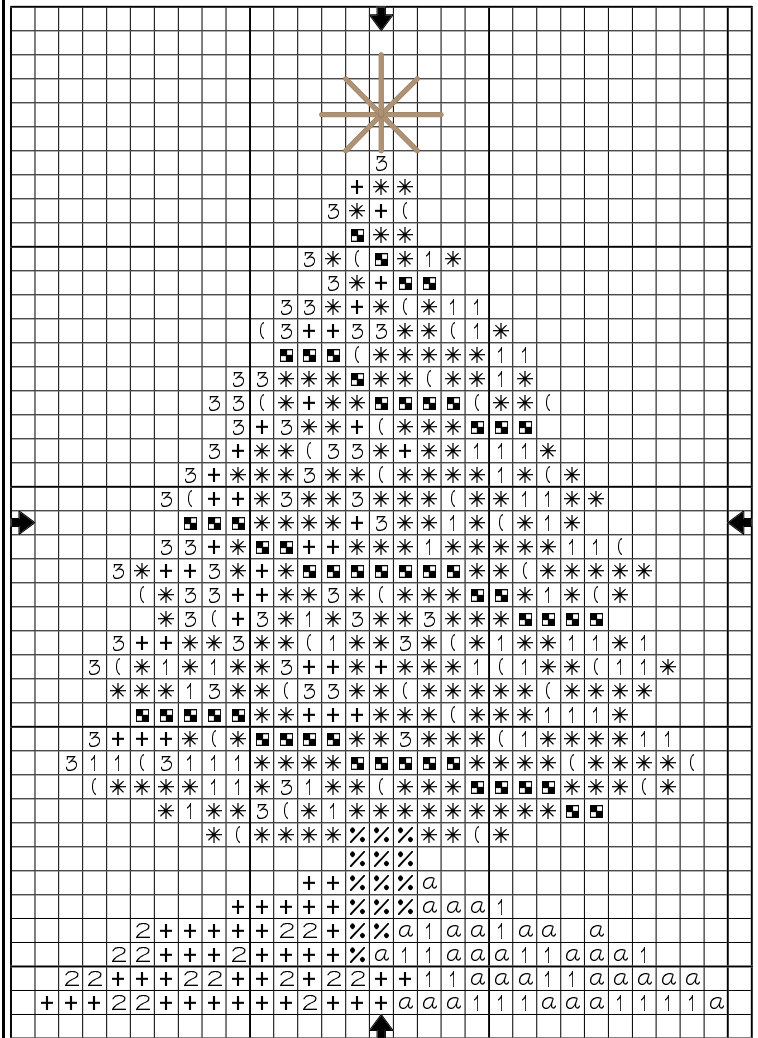
**Designed by:** Shannon Colbow  
**Company:** Wild Card Design Studio  
**Copyright:** Copyright March 4th, 2004  
 (reformatted, January 16th, 2006)  
**Fabric:** 28-count Antique White Monaco  
 or 14-count Aida  
**Stitching Area:** 29 stitches wide x 40 stitches high  
**Size:** 5.26 cm wide x 7.26 cm high  
 (approx. 2.10" wide x 2.90" high)

## Mill Hill Beads:

Symbol	Color	DMC
3	00167	3348
a	00168	159
z	00374	930
1	02010	3866
2	02011	3827
(	02013	326
2	02017	3756
*	02020	909
+	60479	B5200

## Kreinik #4 Braid:

Symbol	Color	DMC
—	221	612



Each symbol represents one bead

**Reading Chart:** The placement chart is read much the same as a cross-stitch chart, but instead of one square representing a stitch, each square on the chart represents one bead. A color and symbol key is included to make placing the beads easier.

**Starting and ending rows:** Begin by bringing your needle up through the material, leaving a 1" tail at the back. As you work the row, carry the tail across the back of the material, working over it as you make each stitch, (or weave the end under a few stitches). At the end of the row, finish with your needle and thread at the back of your project, then run the needle back under five or six stitches. Pull thread through and gently tug to make sure it is secure. Trim off excess thread.

## Stitching instructions:

Place aida cloth in hoop and make sure material is smooth and secure. Cut the 36" piece of white floss into twelve inch lengths. Separate the first length of floss into six separate strands, (separate the next two lengths of floss as needed after the first length has been used up). Thread needle with one strand of floss. Find the center of the aida, then count up 15 squares (including center square). This is the spot where you will begin attaching the beads.

Bring up your needle in the top, left-hand corner of the square. Slide a bead onto the needle and down the thread until it rests on the aida. Then place your needle down through the bottom right-hand hole of the square. Tug gently to make sure thread is snug and the bead is resting securely on the material, (the bead will be laying on the diagonal). Following the chart, sew each bead in place. When you need to move across more than one or two squares in order to begin the next row, end the row being worked, move over, and begin the new row. The back of the piece is neater and there is no excess thread which could become snagged or cut. Continue to attach beads as before.

Once you have completed attaching the beads, thread your needle with the blending filament. Checking the star's placement on chart, make a single cross-stitch in the square indicated above the first bead of the pattern. Make each ray of the star as shown on patten and then secure ends. You may need to tie the ends together in order to secure the filament in place.

Check the back of the completed ornament to make sure all the ends have been secured and trimmed. Remove aida cloth from the hoop and carefully clean the piece in water with a mild soap added. Rinse thoroughly. Roll ornament in a clean towel to soak up excess water. Unroll towel and lay ornament flat, letting piece rest until it is almost dry. Lay ornament right-side down on a thick, dry towel and lightly press with a warm, (not hot), iron until it is dry.

If you have any questions, please feel free to contact me at: [info@wildcarddesignstudio.com](mailto:info@wildcarddesignstudio.com)